

J. MCGALE INDUSTRIES

PRODUCT CATALOG



Grommet Mounted

Commercial Sensor

Sensor Display

License Plate Frame

Surround Your Fleet With Vision

3rd Eye MobileVision

www.JMcGale.com



Company Profile

J. McGale Industries distributes vehicle video cameras and systems that eliminate blind spots and backover accidents and provide video evidence of driver and vehicle operation. The products sold by J. McGale Industries provide the clearest picture, the widest view, the best low-light visibility and the longest warranties.

J. McGale Industries operates with a crisp, clear focus. We are in the mobile video business: nothing more, nothing less. We maintain a certain "tunnel vision" approach - focusing on our product category and servicing our customers the way we know best—we are able to sharpen our expertise rather than obscure it, perfect our offering rather than dilute it. We excel at one thing rather than over-extending into many. From rugged, extreme-duty equipment for underground mining, to sleek flush-mounted camera housings which can be painted to blend in discreetly with distinctive body styles - J. McGale provides the most reliable visibility solutions available.

UPGRADE WITH EASE . . .

ADAPTER ACCESSORIES FOR EVERY BRAND



Event Recording
Vision Integrated Radar
Dual Mode Smart Monitors
Tire Pressure Monitoring
Heavy Duty Camera Systems
Office: (905) 625-8375

**J. MCGALE
INDUSTRIES**



YOUR PARTNER IN SAFETY

WHAT IS DRIVESAFE?

DriveSafe: Most Advanced Vehicle Activity Information System

DriveSafe is the tool you need to modify your drivers' behavior, reduce your accident costs, and generate more revenue from your vehicles. It gives you unmatched awareness of what's happening with your vehicles and drivers at all times.

DriveSafe highlights the risky behaviors that can lead to accidents, personal injury, and property damage—and endanger a driver's professional livelihood. By showing a driver's unsafe actions, you can coach them to drive safer.

Increase revenue and customer satisfaction with DriveSafe as well. Your drivers capture new sales opportunities and service issues through DriveSafe, so you drive top-line growth while improving operational efficiency.



DRIVESAFE BENEFITS

Collision Prevention

Train your drivers to reduce their risky behaviors
 Lower your risk costs – to the bottom line

Driver Protection

Exonerate Drivers when they are not at fault
 Show Drivers the results of risky behavior

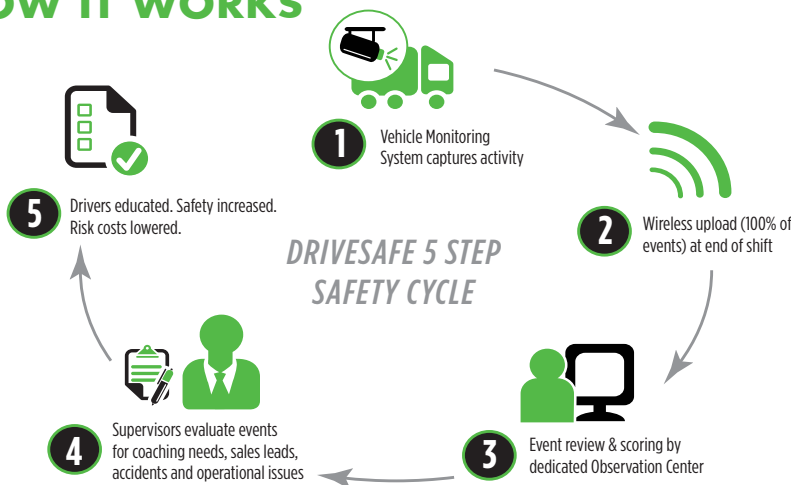
Capture Operational Issues

Use vehicle imaging to feed new customer leads to sales teams
 Minimize customer complaints – capture blocked access, damaged containers and more

Detailed Reporting

See your entire operation at a glance: track trends, show accident hot spots,
 Easily identify the riskiest driver behaviors, vehicles, and routes
 Ensure your supervisors are reviewing events and coaching drivers

HOW IT WORKS



HEAVY DUTY MONITORS - CLASS 7 - 8 Trucks (Recommended)

AWT07MLED



Heavy Duty 7" - 4 Port Monitor

Screen Size: 7" Display with LED Panel Technology
Video Inputs: 5 Cameras (4 CCD, 1 AV)
Shock Resistance: $\geq 10G$, Die Cast Aluminum Housing
Dimensions: 192 (W) • 140.5 (H) • 51.8 (D) mm
Quad, Tri or Split Screen Viewing with Custom Triggers



AWT07M2LED



Heavy Duty 7" - 2 Port Monitor

Screen Size: 7" Display with LED Panel Technology
Video Inputs: 2 Cameras (2 CCD)
Shock Resistance: $\geq 10G$, Die Cast Aluminum Housing
Dimensions: 192 (W) • 140.5 (H) • 51.8 (D) mm
Single Screen Viewing, Built in Switch Box & Custom Triggers



AWT84MSD



Heavy Duty 8.4" SD DVR Monitor

8.4" Display with Touch Screen and LED Panel Technology
Video Inputs: 6 Cameras (5 CCD, 1 AV) and VGA In
Shock Resistance: $\geq 10G$, Die Cast Aluminum Housing
Built in DVR / SD Card Slot (Accepts up to 32GB)
Quad, Tri or Split Screen Viewing with Custom Triggers



AWT07MLESD



Heavy Duty 7" SD DVR Monitor

Screen Size: 7" Display with LED Panel Technology
Video Inputs: 6 Cameras (5 CCD, 1 AV)
Shock Resistance: $\geq 10G$, Die Cast Aluminum Housing
Built in DVR / SD Card Slot (Accepts up to 32GB)
Quad, Tri or Split Screen Viewing with Custom Triggers



SLIM LINE MONITORS - CLASS 1-6 Trucks (Recommended)

AWTSL503M



5" Slim Line Monitor

Screen Size: 5" Display with LED Panel Technology
Video Inputs: 3 Cameras (3 CCD)
Shock Resistance: $\geq 10G$, Die Cast Aluminum
Dimensions: 152 (W) • 106 (H) • 28.5 (D) mm
Single Screen Viewing w / Custom Triggers



AWTSL43M



4.3" Mirror Monitor

Screen Size: 4.3" Display with Auto Dim
Video Inputs: 2 Cameras (2 CCD)
Shock Resistance: $\geq 5G$
Direct Replacement of OEM Rearview Mirror
Single Screen Viewing w / Custom Triggers



AWTSL714MQ



7" Slim Line Monitor

Screen Size: 7" Display with LED Panel Technology
Video Inputs: 4 Cameras (4 CCD)
Shock Resistance: $\geq 7G$, Up to 10G w/Hardware
Dimensions: 181 (W) • 122 (H) • 24 (D) mm
Quad, Tri or Split Screen w / Custom Triggers



HEAVY DUTY CAMERAS - CLASS 7 - 8 Trucks (Recommended)

AWT1020T / AWT1020W



Heavy Duty Universal Color Camera

1/3" Sony Super HAD Color CCD
Lens Angle: (AWT1020T - 150°) (AWT1020W - 170°)
Shock Resistance: $\geq 10G$, Die Cast Aluminum Housing
Waterproof IP68 Rating, Infrared LED for Night Viewing
Designed to MILSPEC Standards

AWT150C / AWT150CS



Universal Mount Camera / Shutter

1/3" Sony Super HAD Color CCD
Waterproof IP68 Rating, Infrared LED for Night Viewing
Shock Resistance: $\geq 10G$, Die Cast Aluminum Housing
Internal Heater, Designed to MILSPEC Standards
Shutter Camera Available * Ask for Details

AWTCC758



Compact Universal Color Camera

1/4" Sony Super HAD Color CCD
Waterproof IP68 Rating
Shock Resistance: $\geq 10G$, Die Cast Aluminum Housing
Designed to MILSPEC Standards
Ultra Compact Design for Flexible Mounting

AWT1020SC

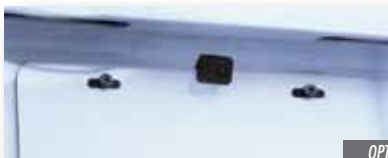


Adjustable Side Mount Color Camera

1/4" Sony Super HAD Side Color CCD
Waterproof IP68 Rating, Infrared LED for Night Viewing
Shock Resistance: $\geq 10G$, Die Cast Aluminum Housing
Flexible Camera to Accommodate all Angles
Designed to MILSPEC Standards

SLIM LINE CAMERAS - CLASS 1-6 Trucks (Recommended)

AWTSL10C



Mounts Behind Or



Adjustable License Plate Cam

Image Type: 1/3 Color Camera, Lens: 170°
Resolution: NTSC 628 (H) • 512 (V)
Shock Resistance: $\geq 5G$, IP67
Universal License Plate Mounting
Dimensions: 22 (H) • 22 (W) • 33 (D) mm

AWTSL822C



OEM FIT

Transit Camera: License Plate

Image Type: 1/3 Color Camera, Lens: 170°
Resolution: NTSC 510 (H) • 492 (V)
Shock Resistance: $\geq 5G$, IP 67
Direct Replacement of OEM Rearview Mirror
Dimensions: 33 (H) • 60 (W) • 31 (D) mm

AWTSL330C



Hole Size: 24.5mm

Bullet Mount Camera

Image Type: 1/3 Color Camera, Lens: 120°
Resolution: NTSC 510 (H) • 492 (V)
Shock Resistance: $\geq 5G$, IP68
Flush Mount Bullet Camera - Hole Saw Included
Dimensions: 28 (Diameter) • 39 (D) mm

COMPLETE CAMERA & RADAR KITS (Recommended)

Utility

*Call for multiple camera applications
*Radar also available as separate kit



Emergency

*Call for multiple camera applications
*Radar also available as separate kit



Ford Transit

*Call for multiple camera applications
*Radar also available as separate kit



Delivery

*Call for multiple camera applications
*Radar also available as separate kit



OTR

*Call for multiple camera applications
*Radar also available as separate kit



*Required for Tractor/Trailer Applications



Universal Van

*Call for multiple camera applications
*Radar also available as separate kit



* All Cameras, Monitors and Radars are Interchangeable. Please Call for Specialty Applications.

COMPLETE CAMERA & RADAR KITS (Recommended)

Refuse



*Call for multiple camera applications
*Radar also available as separate kit



Construction



*Call for multiple camera applications
*Radar also available as separate kit



Mining



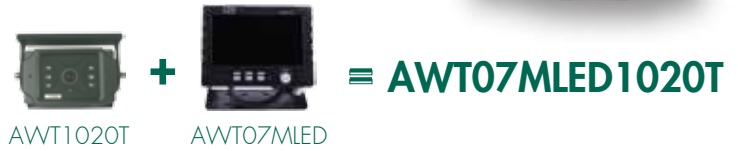
*Call for multiple camera applications
*Radar also available as separate kit



Armored Transport



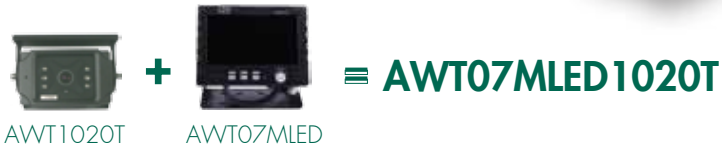
*Call for multiple camera applications
*Radar also available as separate kit



Concrete / Aggregate



*Call for multiple camera applications
*Radar also available as separate kit



Military



*Call for multiple camera applications
*Radar also available as separate kit



* All Cameras, Monitors and Radars are Interchangeable. Please Call for Specialty Applications.

ADAPTER PROGRAM AND ACCESSORIES

"Plug 'N Play" has never been easier. Our custom built adapters fit all major competitor brands allowing you to effortlessly upgrade your current system to the industry leading 3rd Eye MobileVision™ brand.

*Please specify which camera system you are currently using when ordering



AWTCAGE
Heavy Duty
Camera Cage



AWTMIRRMNT
Camera Mount
for Side Mirrors



AWT-CabMnt
Camera Mount
for Side of Cab
(Must Specify Side)



AWT-AllyCamMnt
Camera Mount for
the Tailgate of the Truck
(Must Specify Side)



AWTSVLHD
Heavy Duty
Swivel Mount



Standard Cable
AWT065T - 65 ft.
AWT042T - 42 ft.
AWT025T - 25 ft.
AWT010T - 10 ft.



Extension Cable
AWT065TT - 65 ft.
AWT042TT - 42 ft.
AWT025TT - 25 ft.
AWT010TT - 10 ft.



AWT-WinMnt
Glass Mount for
Slim Line Monitors
(Removable)

BODY BUILDER CABLE

WHAT IS THE BODY BUILDER CABLE?

Body Builder Cable: The most advanced wiring and connector standard

At the request of several national refuse fleets, 3rd Eye MobileVision™ developed a "Pass-Thru" cable to act as the single "Communication Backbone" between the truck chassis and body for advanced video safety systems.

PURPOSE AND SCOPE

A single "Pass-Thru" cable terminated with heavy duty connectors would be the single "communications backbone" between the truck chassis and body.

The cable would support multiple electrical signals including analog video, audio and digital data. The cable is to be installed by the truck chassis OEM when an appropriate cable path is clearly visible.

The cab pre-wire cable is routed with the wiring loom of the truck cab when the truck chassis is manufactured.

The custom multi-conductor cable has 21 circuits that provide multiple functions including: DC low voltage power, ground video, audio, both analog and digital.

Non-proprietary connectors provide easy access and economical connectivity for advanced video, radar sensors and digital information technologies.



CAB ADAPTER # 29086



EXT CABLE #29073



SENSORS INTERFACE

3RD EYE #AWT030TT CABLE



BB CAB PRE-WIRE CABLE



BB EXTENSION CABLE #29089



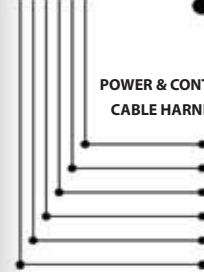
TAILGATE ADAPTER #29059



**CAMERA & A/V
INTERFACE HARNESS**

Port "A" Camera In 6PminiDIN
Port "B" Camera In 6PminiDIN
Port "C" Camera In 6PminiDIN
Port "R" Camera In 6PminiDIN

Live Video Out (RCA - White Wire)
Live Audio Out (RCA - Black Wire)
A/V Video In (RCA - Yellow Wire)
A/V Audio In (RCA - Red Wire)
Camera Out (RCA - Green Wire)



**POWER & CONTROL
CABLE HARNESS**

Ignition Power (+9.6~32VDC - Red Wire)
Chassis Ground (GND - Black Wire)
Reverse Trigger (+9.6~32VDC - Blue Wire)
"A" Port Trigger (+9.6~32VDC - Yellow Wire)
"B" Port Trigger (+9.6~32VDC - Orange Wire)
"C" Port Trigger (GND - White Wire)



The Preferred mounting location for the AWTI/3rd Eye monitor is overhead. Dual Steer trucks require the use of a swivel base. Camera and monitor controls are to be located for easy access within reasonable reach in all driving positions. If the truck cab has been pre-wired with the AWTI Body-Builder Cable kit please contact AWTI for in-depth documentation that will assist you.

OBJECT DETECTION - INTEGRATED RADAR SYSTEMS

AWT3000RS



Grommet Mounted Radar

Voltage: 10-28 VDC, Power: 0.6mA (12v)
 Operating Temperature: -40°C to 85°C
 Audible: 95db @ 3m, Range: Variable up to 30'
 4" Grommet Mount for OEM Fit
 All Weather Operation, 5 Year Warranty

AWT2000RS



Surface Mounted Radar

Voltage: 10-28 VDC, Power: 0.6mA (12v)
 Operating Temperature: -40°C to 85°C
 Audible: 95db @ 3m, Range: Variable up to 30'
 Ruggedized Surface Mount Housing
 All Weather Operation, 5 Year Warranty

AWT1000RS



Licence Plate Mounted

Voltage: 10-28 VDC, Power: 0.6mA (12v)
 Operating Temperature: -40°C to 85°C
 Audible: 95db @ 3m, Range: Variable up to 12'
 Easy Mount for OEM Fit
 All Weather Operation, 5 Year Warranty

Reduce Backing Accidents

The 3rd Eye MobileVision family of "Integrated Radar Systems" offer cutting edge solutions to protect both the public and your drivers. This system will continue to drive up profitability by helping reduce costly blind spot accidents while increasing peace of mind and productivity within the organization!

This ruggedized radar system utilizes your existing 3rd Eye MobileVision Camera cables for easy installation. With our integrated Doppler Microwave Technology, you will benefit from the advantage of object detection/collision avoidance even under the most extreme applications.

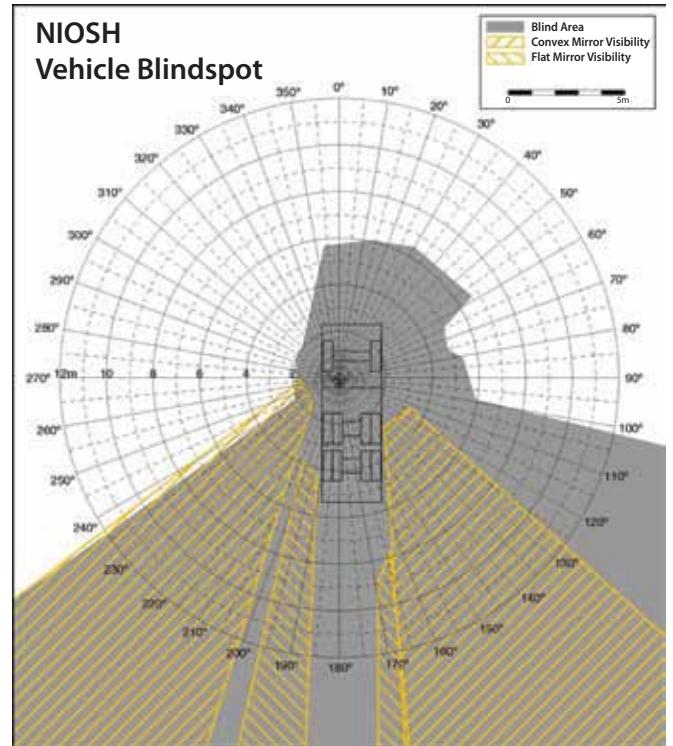
SYSTEM BENEFITS:

- Single Sensor Operation*
- Intelligent Technology
- Retrofit & OEM Solutions
- Integrates to Existing AWTI Camera Cable/Body Builder
- All Weather Operation
- 5 YEAR WARRANTY
- In-Cab Display w/Audible and Visual Warning
- Automatic Braking (Optional)

***MULTIPLE SENSOR SYSTEMS AVAILABLE FOR SPECIALITY APPLICATIONS**



- ✓ SAVE LIVES
- ✓ PROTECT ASSETS
- ✓ LOWER INSURANCE
- ✓ REDUCE ACCIDENTS
- ✓ INCREASE PRODUCTIVITY
- ✓ INCREASE DRIVER RETENTION



www.jmcgale.com
 Office: (905) 625-8375

4342 Hartfield Grove | Suite 101 | Mississauga, ON L4W 4G9

**J. MCGALE
 INDUSTRIES**

YOUR PARTNER IN SAFETY



TIRE PRESSURE MONITORING

HOW IT WORKS: PressurePro's Original Tire Pressure Monitoring Systems continuously monitor tire pressures and temperatures using wireless RF technology to transmit data from stem mounted Sensors, to an in-cab display Monitor. Sensors have unique serial codes eliminating cross-talk and allowing custom baseline pressures from 8 to 300 psi.



SYSTEM FEATURES

- Real time pressure readings
- Two low pressure alert levels
- Variable high pressure alert
- High temperature alert at 194°F
- Pressures reports in psi, KPa, BAR
- Built in RS232 capabilities
- Complete data logging ability
- American Made product
- In-cab or remote monitoring

ALERT & REPORT DETAILS

- 1st level low pressure alerts at 12.5% drop
- 2nd level low pressure alerts at 25% drop
- Variable high pressure alert, 10-45% increase
- High temperature alert at 194°F
- Data logging, storage of up to 90 days
- Remote monitoring options

Reliable. Durable. Tough.

SYSTEM SPECS

- Pressure Range = 10 to 300 PSI
- Operating Frequency = 433.92
- Temperature Range = -40° to 285°F
- Sensor Dimensions = 1.01" x 1.11"
- Sensor Weight = 17 grams
- Thread Size = Large & Standard Bore
- Power Requirements = 12 VDC
- Operating Draw = <77mA
- Monitoring Positions = 1 to 66

Market's quickest installation and simplest programming: With an average installation of only 30 minutes, PressurePro units can be easily installed during regularly scheduled maintenance. Powered by a 12V source, Monitors provide quick installation of Sensors requiring only a few touches of a button.

Sensor Information: Developed alongside GE Sensing and utilizing state of the art design and plastics, PressurePro Sensors are packed with over 22 years of top-of-the-line development and engineering. Utilizing specially designed lithium-ion batteries, PressurePro Sensors tout the market's longest Sensor life while superior component useage ensures the market's most durable product.



BENEFITS

Decrease Downtime & Maintenance: Real time tire information helps you identify and resolve tire issues before they become detrimental, helping keep your vehicles running & operational.



Extend Tire Life: Under inflated tires are the #1 cause of tire failure and contribute to tire disintegration, heat buildup, ply separation and sidewall/casing breakdowns.

Add Safety: Faulty tires aren't just costly, they are dangerous for your vehicle operators and maintenance crew. Real time monitoring and alerts add safety for your vehicles & workers.



The Best Choice for DVR



- H.264**
- Triple Stream**
-  **64CH CMS**
-  **EMAP**
-  **3G**
-  **AVI**
-  **Safari**

- Triple stream - individual network video / 3G / record streaming
- GPS Timing function
- Ignition-off record (30sec~60min)
- 8 Alarm-Input
- Trays for easy HDD swap and support anti-shock up to 2G
- 3G phone remote view (iPhone / iPad / Window Mobile / Android)

Applications

Suitable for any way of transportation:
Transport Vehicle, School Bus, Taxi, Garbage Truck, Ship, etc.



3 Models Available



3G/ WIFI / IO / GPS

IO / GPS

GPS Only

GPS Information Record

GPS DVR supports latitude/longitude coordinates and driving speed along with additional information, tracks playback in Google Map.



G-Sensor & Events Status Record

Built-in G-Sensor can record X/Y/Z axis changes, supports ignition recording function.



Daylight Saving Time

Supports international daylight saving time, time set aside one hour automatically, eliminating the trouble of manually adjusting the time.



CMS Mobile Surveillance Management Platform Software

Includes CMS software that can view real-time video and manages fleet while enhancing the overall scope of a simple GPS tracker.





www.JMcGale.com



Office: (905) 625-8375

4342 Hartfield Grove, Suite 101
Mississauga, ON L4W 4G9

Fax: (905) 625-3356

